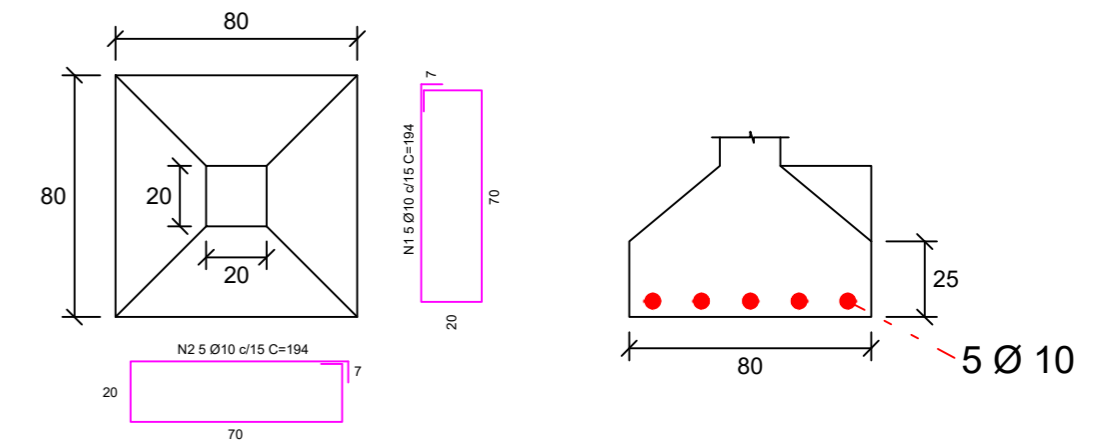
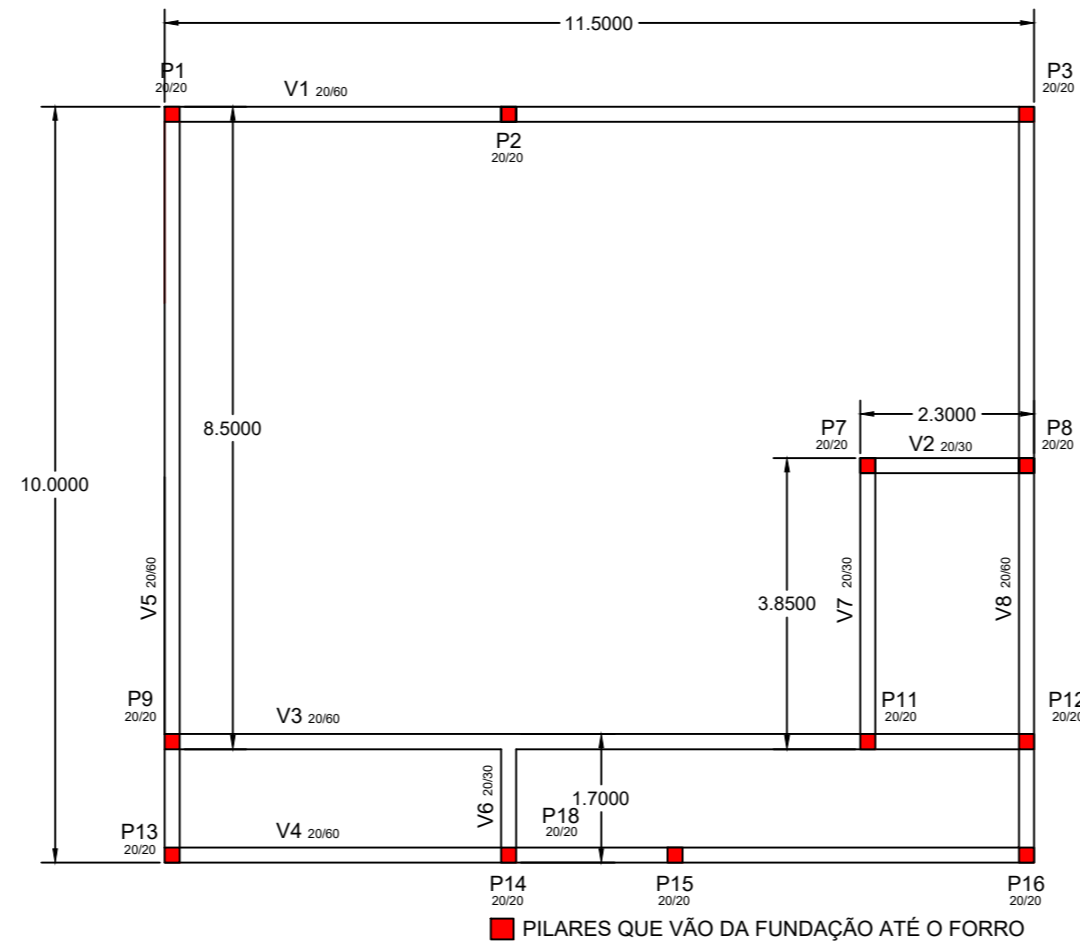
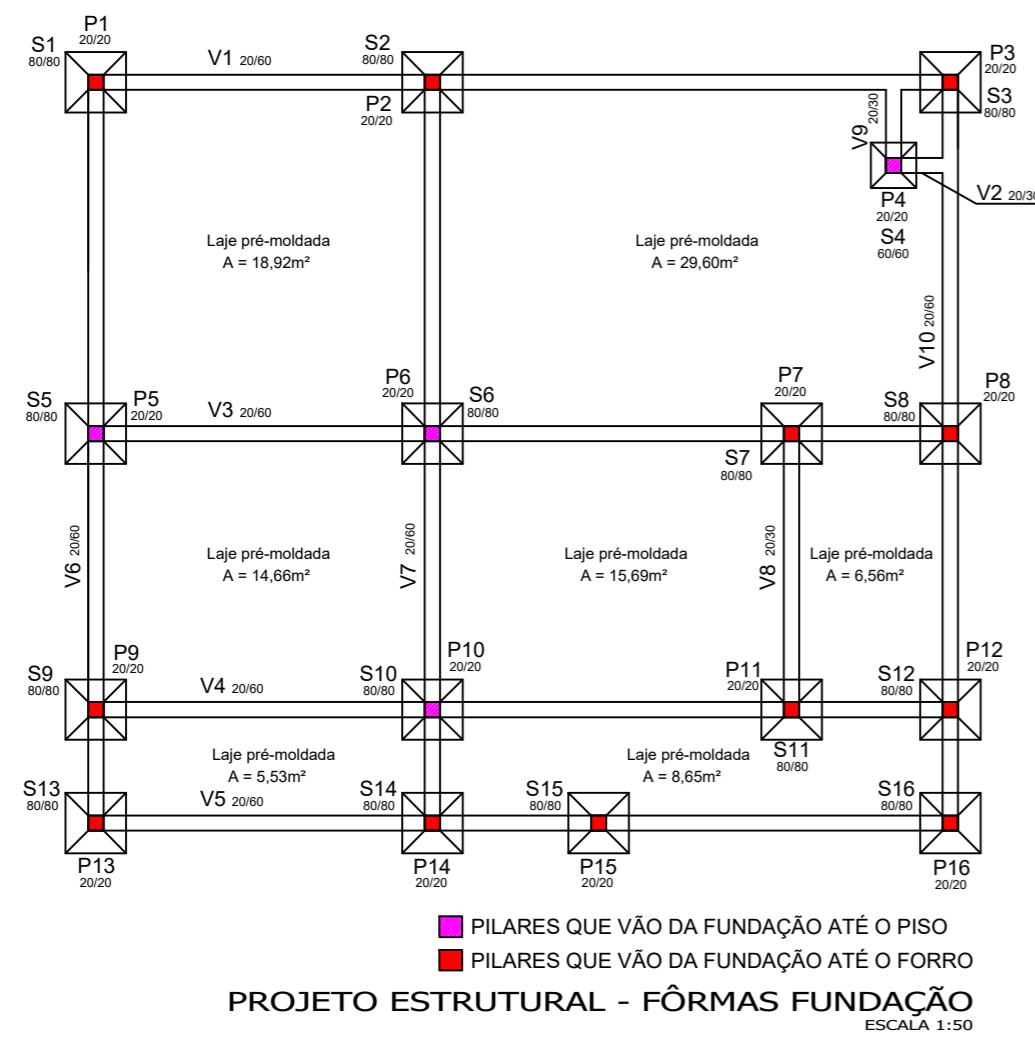
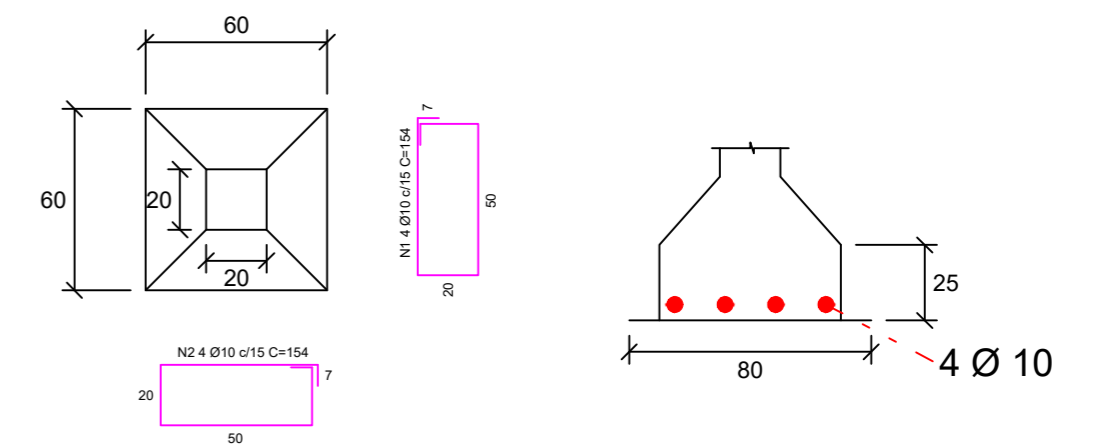


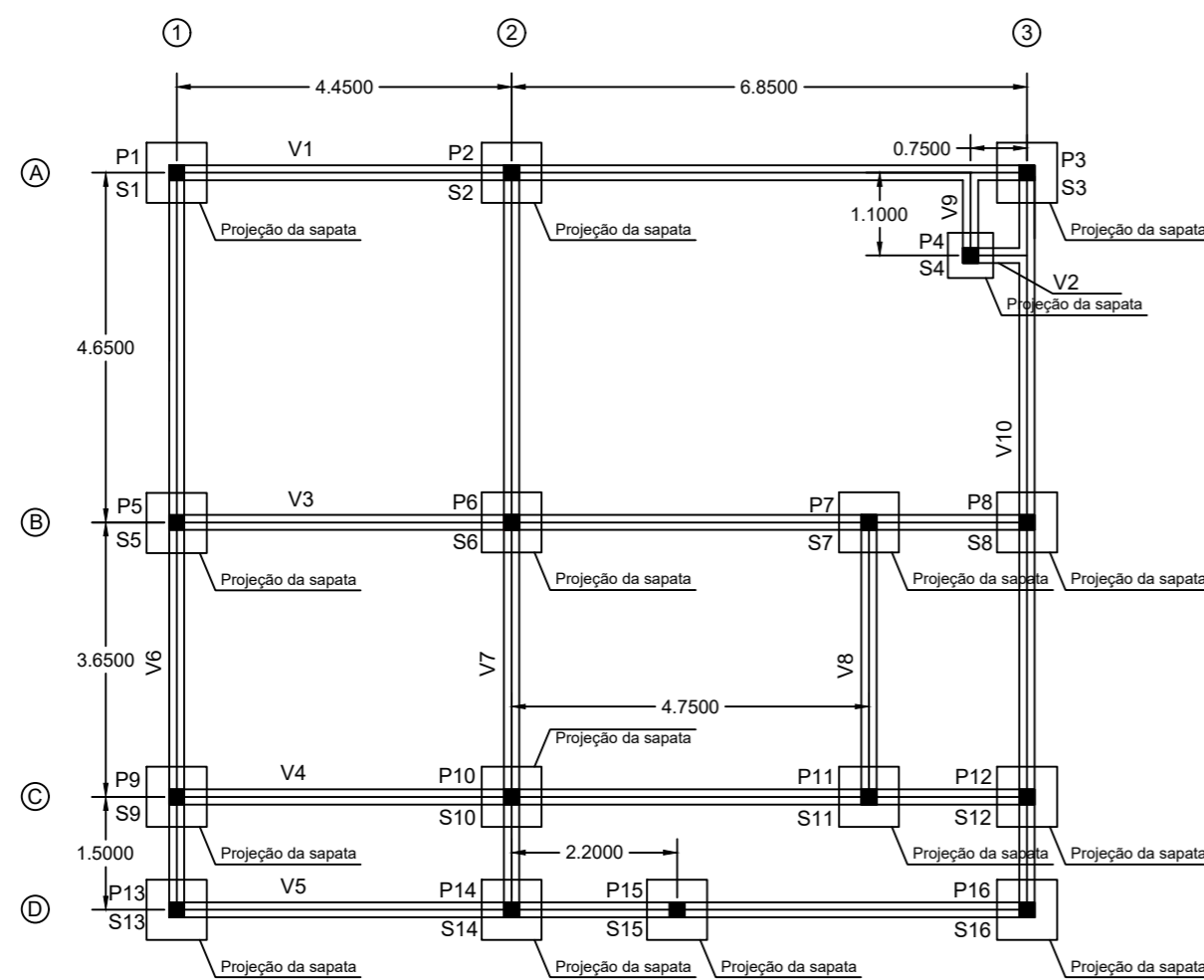
S1/S2/S3/S5/S6/S7/S8/S9/S10/S11/ S12/S13/S14/S15/S16



S4



PROJETO ESTRUTURAL - SAPATAS
ESCALA 1:20



AÇO	BIT	QUANT	COMPRIMENTO	
			UNIT	TOTAL
S1 - S17 (15x)				
50A	10	5	194	970
50A	10	5	194	970
S4 (1x)				
50A	10	4	154	616
50A	10	4	154	616

RESUMO DE AÇO			
AÇO	BIT	COMPR	PESO
	mm	m	kgf
50A	10	303,32	187,1
Peso Total	50A =		187,1 kgf

Volume sapatas (0,80x0,80)x0,25	Qtidade de sapatas
0,245m ³	15
Volume sapatas (0,60x0,60)x0,25	Qtidade de sapatas
0,14 m ³	1
Volume total	3,82 m³

PREFEITURA MUNICIPAL
ARROIO DO MEIO / RS
 ADMINISTRAÇÃO:
2021 - 2024
 RUA MONSENHOR JACOB SEGER | 186 | FONE 051 3716-1166
 ARROIO DO MEIO | RS

ASSUNTO: PROJETO EXECUTIVO - CENTRO DE EVENTOS - SEDE MQG

Prefeito Municipal
DANILO JOSÉ BRUXEL

Responsável Técnico
WILLIAM R. BIANCHIN
 CREA RS 259.964

Endereço:
RUA VALDIR M. BOURSCHIED
BAIRRO MEDIANEIRA

PRANCHA: PROJETO ESTRUTURAL
 LOCAÇÃO E FÔRMAS

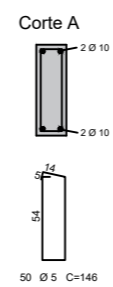
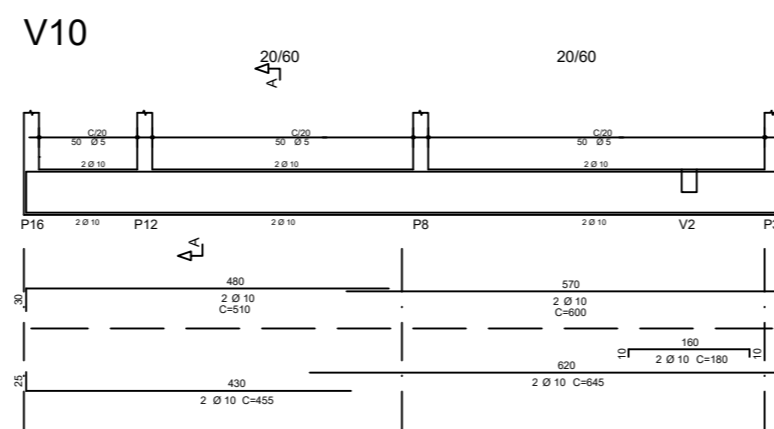
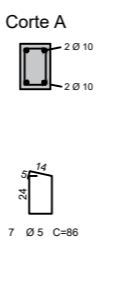
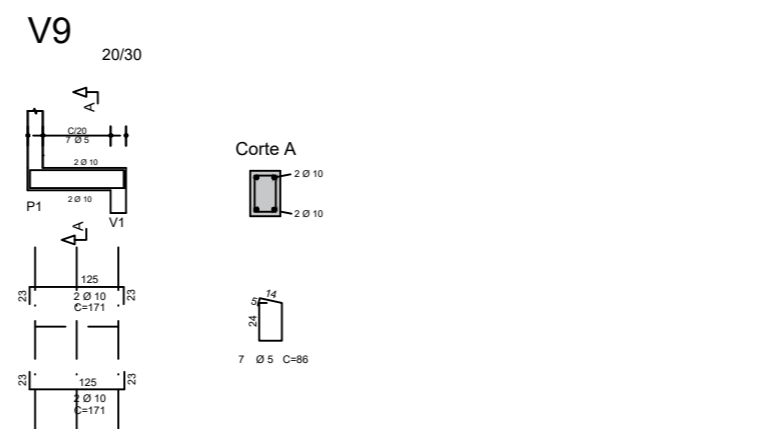
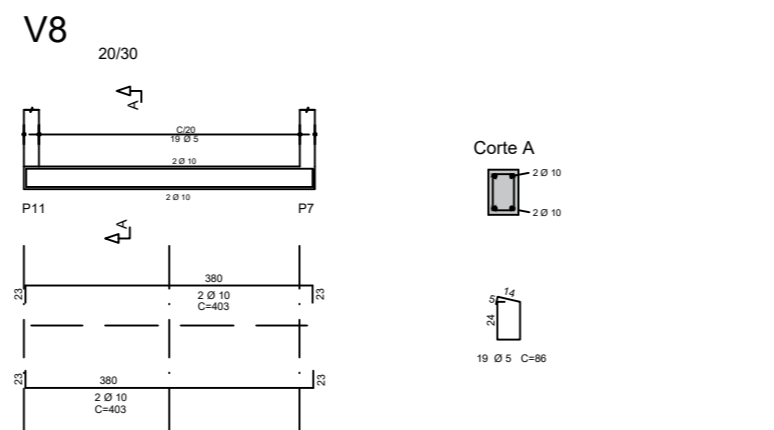
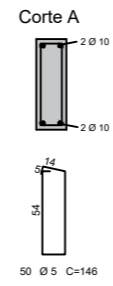
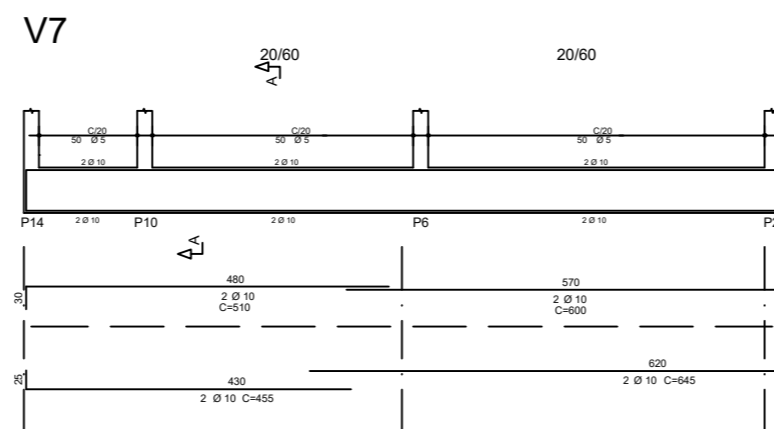
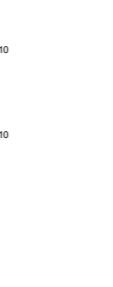
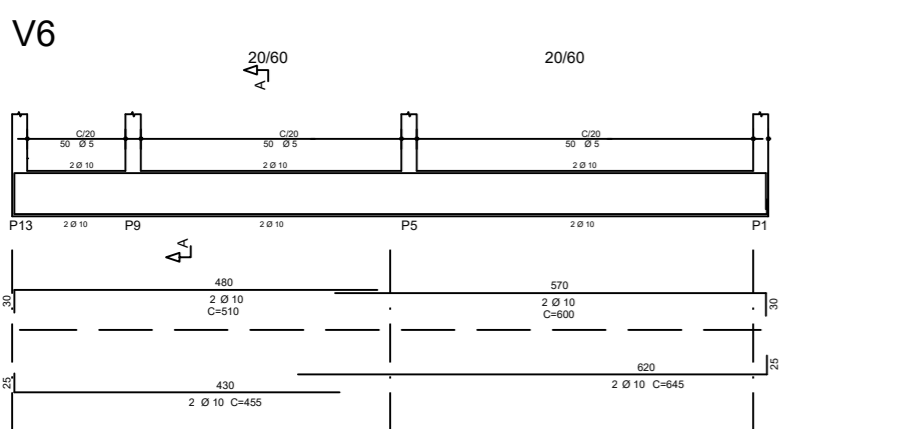
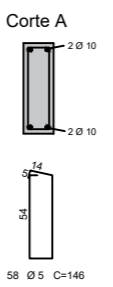
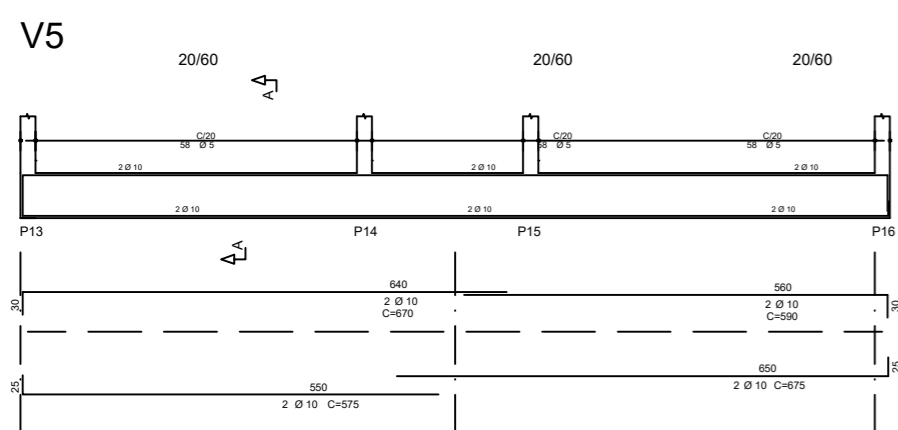
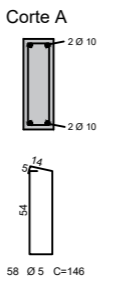
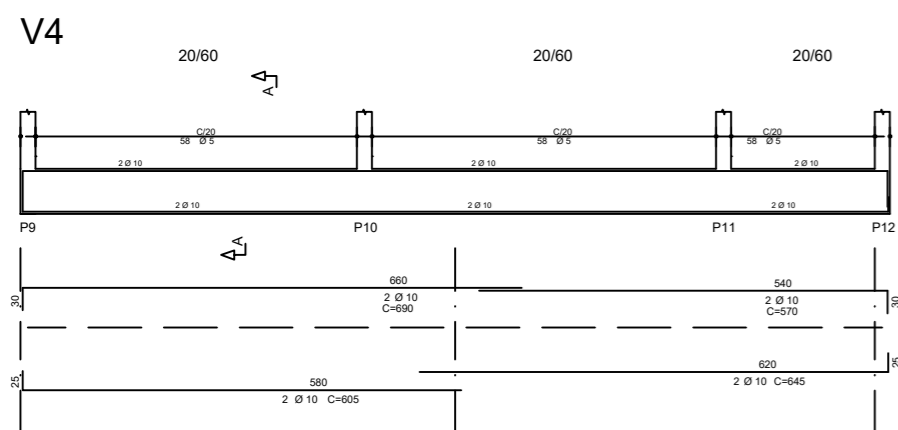
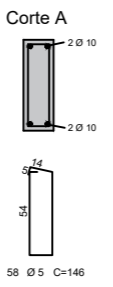
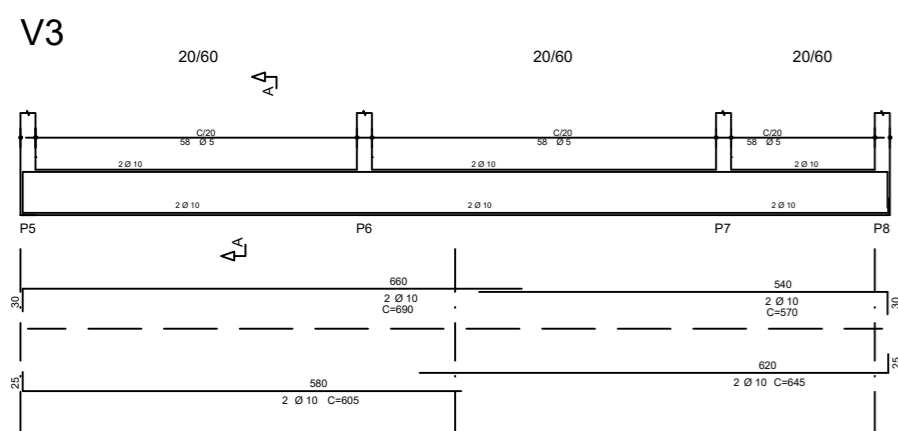
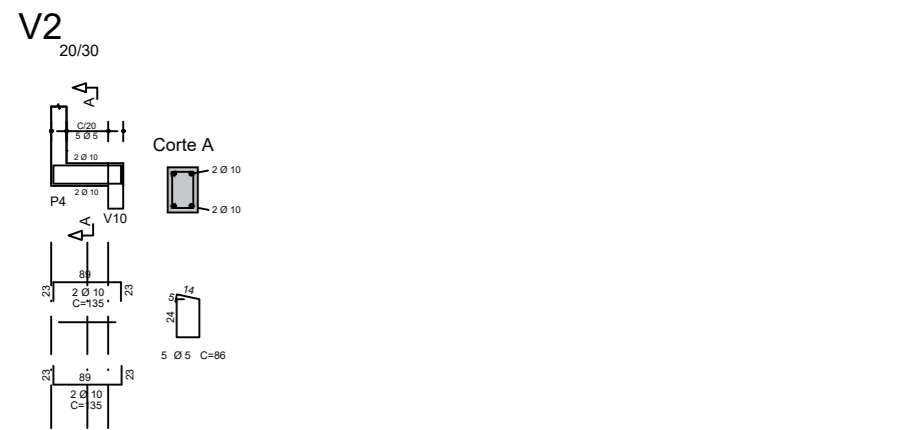
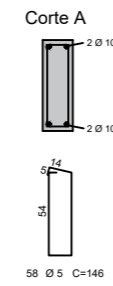
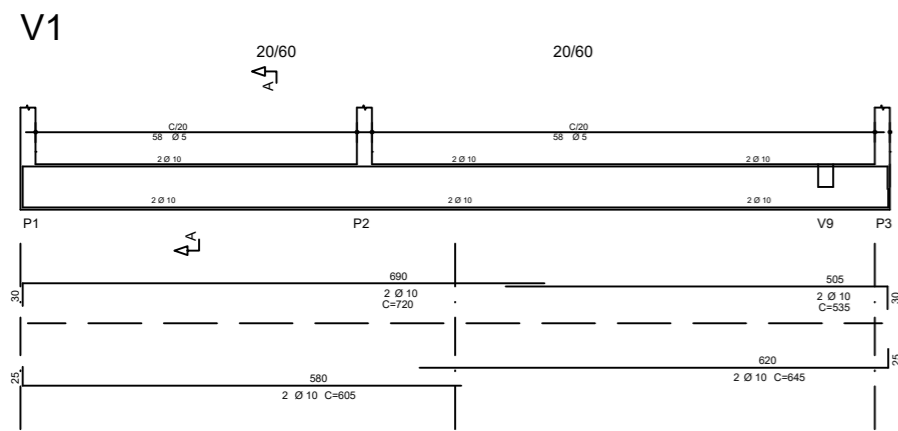
DATA: 03/2023

ÁREA: 115,00 m²

ESCALA: INDICADA

FOLHA: 06/10

PROJETO ESTRUTURAL - VIGAS BALDRAME
ESCALA 1:50



V10					
50A	10	2	510	1020	
50A	10	2	600	1200	
50A	10	2	180	360	
50A	10	2	455	910	
50A	10	2	645	1290	
60A	5	50	146	7300	

RESUMO DE AÇO			
AÇO	BIT	COMPR	PESO
	mm	m	kgf
60A	5	584,38	90,0
50A	10	365,26	225,4
Peso Total	60A =		90,0 kgf
Peso Total	50A =		225,4 kgf

PROJETO ESTRUTURAL - VIGAS BALDRAME
ESCALA 1:50

	AÇO	BIT	QUANT	COMPRIMENTO	
				UNIT	TOTAL
		mm		cm	cm
V1	50A	10	2	720	1440
	50A	10	2	535	1070
	50A	10	2	605	1210
	50A	10	2	645	1290
	60A	5	58	146	8468
V2	50A	10	2	135	270
	50A	10	2	135	270
	60A	5	5	86	430
V3	50A	10	2	690	1380
	50A	10	2	570	1140
	50A	10	2	605	1210
	50A	10	2	645	1290
	60A	5	58	146	8468
V4	50A	10	2	690	1380
	50A	10	2	570	1140
	50A	10	2	605	1210
	50A	10	2	645	1290
	60A	5	58	146	8468
V5	50A	10	2	670	1340
	50A	10	2	590	1180
	50A	10	2	575	1150
	50A	10	2	675	1350
	60A	5	58	146	8468
V6	50A	10	2	510	1020
	50A	10	2	600	1200
	50A	10	2	455	910
	50A	10	2	645	1290
	60A	5	50	146	7300
V7	50A	10	2	510	1020
	50A	10	2	600	1200
	50A	10	2	455	910
	50A	10	2	645	1290
	60A	5	50	146	7300
V8	50A	10	2	403	806
	50A	10	2	403	806
	60A	5	19	86	1634
V9	50A	10	2	171	342
	50A	10	2	171	342
	60A	5	7	86	602



PREFEITURA MUNICIPAL
ARROIO DO MEIO / RS

ADMINISTRAÇÃO:
2021 - 2024

RUA MONSENHOR JACOB SEGER | 186 | FONE 051 3716-1166
ARROIO DO MEIO | RS

ASSUNTO: PROJETO EXECUTIVO - CENTRO DE EVENTOS - SEDE MQG

Prefeito Municipal
DANILO JOSÉ BRUXEL

Responsável Técnico
WILLIAM R. BIANCHIN
CREA RS 259.964

ENDEREÇO:
RUA VALDIR M. BOURSCHIED
BAIRRO MEDIANEIRA

PRANCHA:
PROJETO ESTRUTURAL
VIGAS BALDRAME

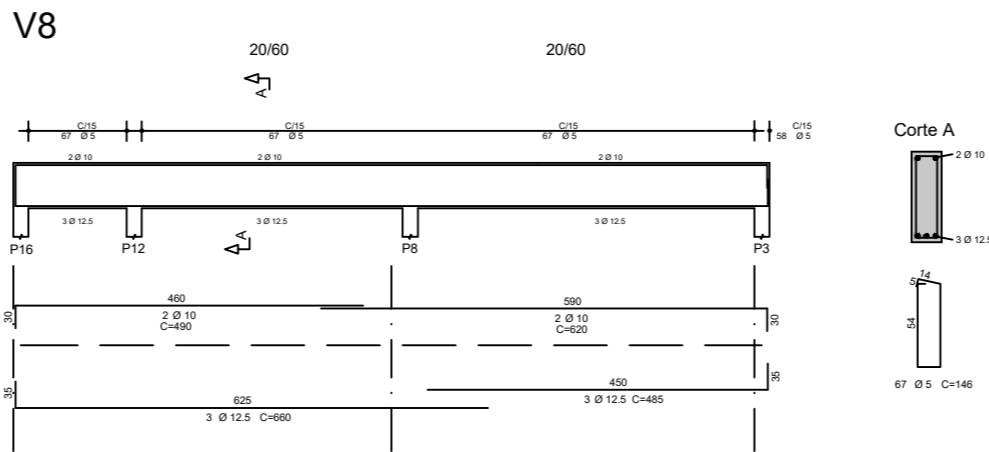
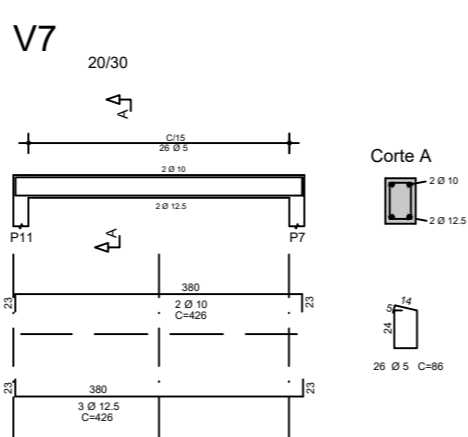
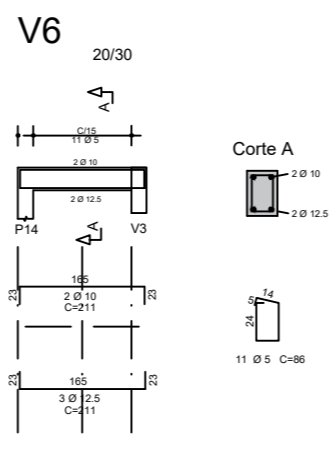
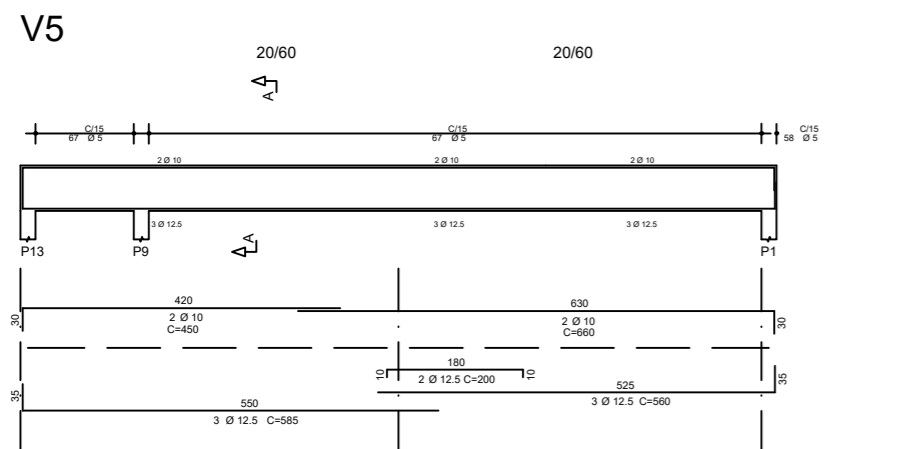
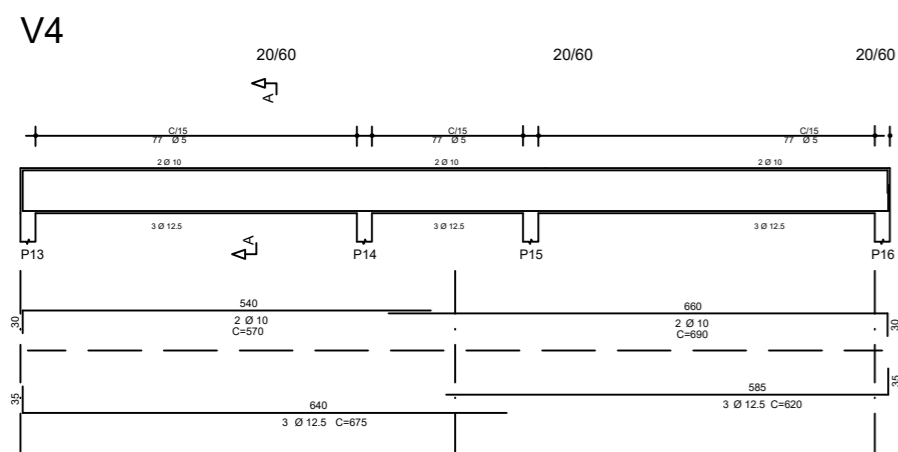
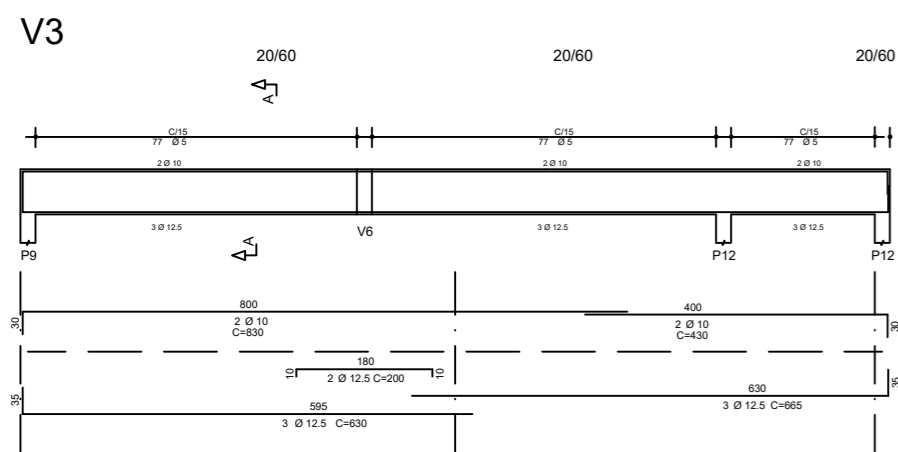
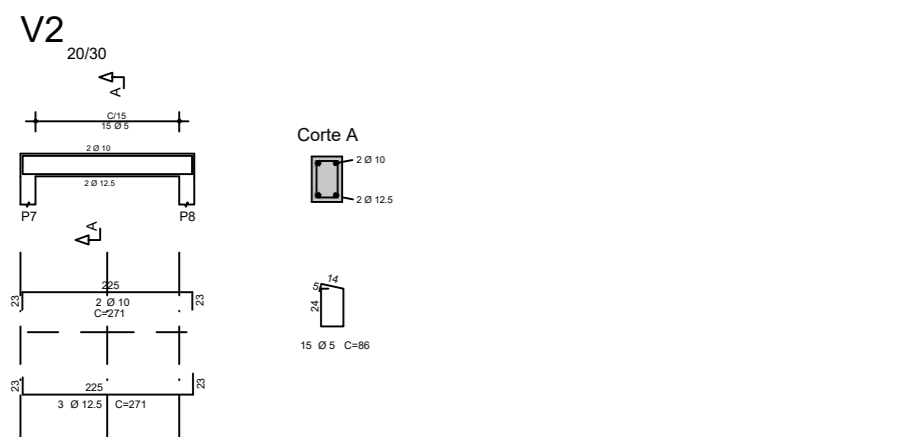
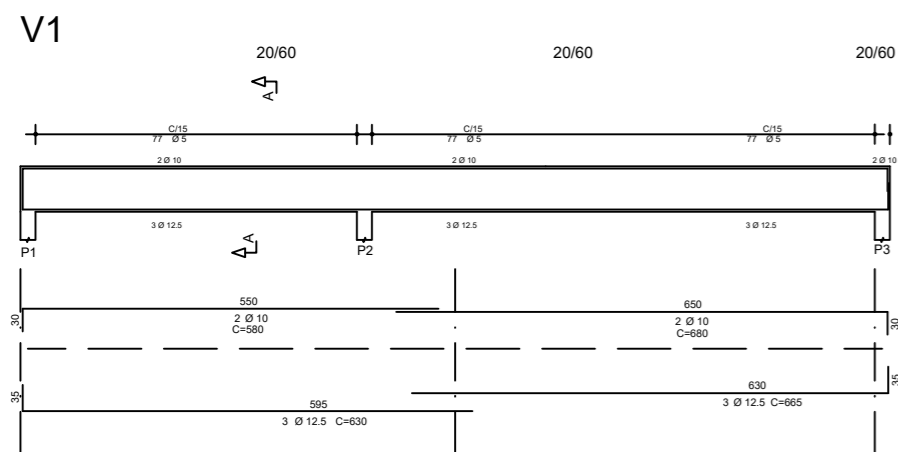
DATA:
03/2023

ÁREA:
115,00 m²

ESCALA:
1:50

FOLHA:
07/10

PROJETO ESTRUTURAL - VIGAS SUPRAESTRUTURA
ESCALA 1:50



AÇO	BIT	QUANT	COMPRIMENTO	
			UNIT	TOTAL
	mm		cm	cm
V1				
50A	10	2	580	1160
50A	12.5	2	680	1360
50A	12.5	3	630	1890
50A	12.5	3	665	1995
60A	5	77	146	11242
V2				
50A	10	2	271	542
50A	12.5	3	271	813
60A	5	15	86	1290
V3				
50A	10	2	830	1660
50A	10	2	430	860
50A	12.5	2	200	400
50A	12.5	3	630	1890
50A	12.5	3	665	1995
60A	5	77	146	11242
V4				
50A	10	2	570	1140
50A	10	2	690	1380
50A	12.5	3	675	2025
50A	12.5	3	620	1860
60A	5	77	146	11242
V5				
50A	10	2	450	900
50A	10	2	660	1320
50A	12.5	2	200	400
50A	12.5	3	585	1755
50A	12.5	3	560	1680
60A	5	67	146	9782
V6				
50A	10	2	211	422
50A	12.5	3	211	633
60A	5	11	86	946
V7				
50A	10	2	426	852
50A	12.5	3	426	1278
60A	5	26	86	2236
V8				
50A	10	2	490	980
50A	10	2	620	1240
50A	12.5	3	660	1980
50A	12.5	3	485	1455
60A	5	67	146	9782

RESUMO DE AÇO			
AÇO	BIT	COMPR	PESO
	mm	m	kgf
60A	5	577,62	88,9
50A	10	138,16	85,2
50A	12.5	220,49	212,3
Peso Total	60A =		88,9 kgf
Peso Total	50A =		297,5 kgf



PREFEITURA MUNICIPAL
ARROIO DO MEIO / RS

ADMINISTRAÇÃO:

2021 - 2024

RUA MONSENHOR JACOB SEGER | 186 | FONE 051 3716-1166
ARROIO DO MEIO | RS

ASSUNTO: PROJETO EXECUTIVO - CENTRO DE EVENTOS - SEDE MQG

Prefeito Municipal
DANILO JOSÉ BRUXEL

Responsável Técnico
WILLIAM R. BIANCHIN
CREA RS 259.964

ENDEREÇO:

RUA VALDIR M. BOURSCHIED
BAIRRO MEDIANEIRA

PRANCHA:
PROJETO ESTRUTURAL
VIGAS SUPRAESTRUTURA

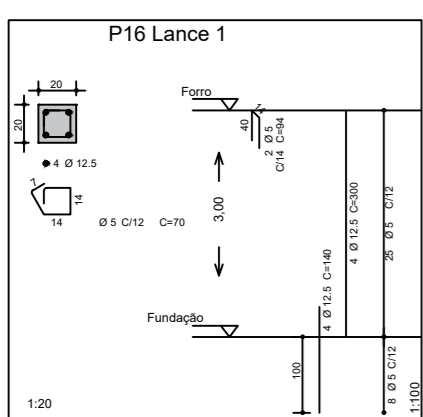
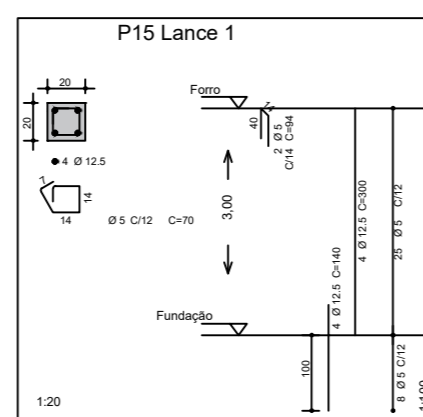
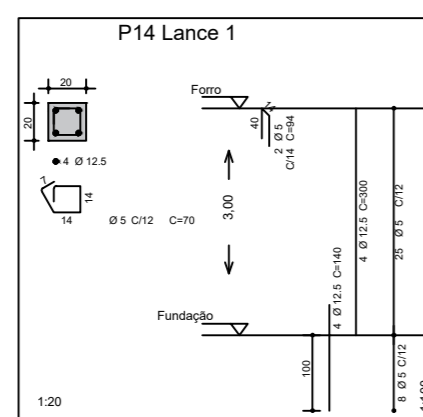
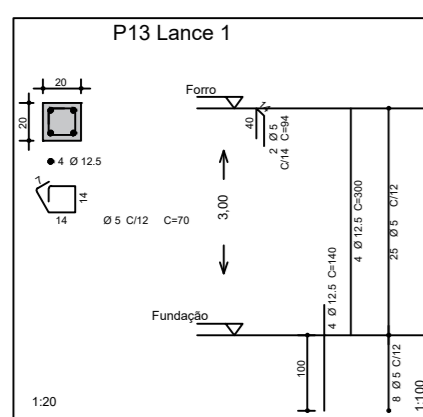
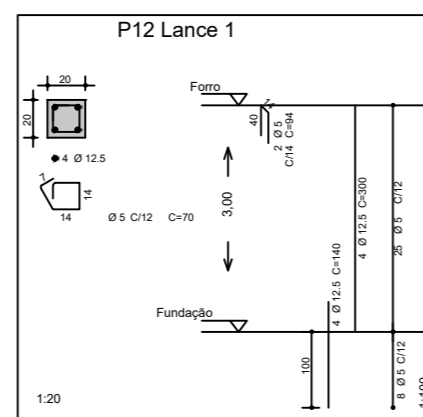
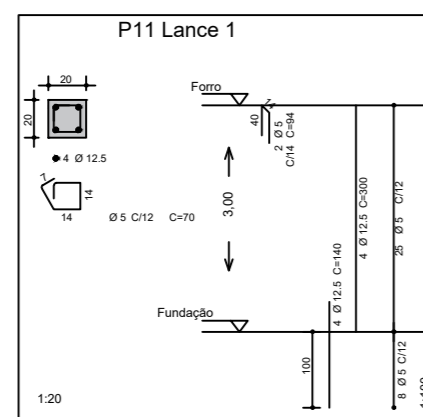
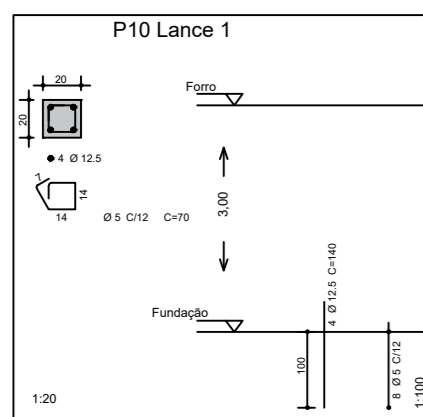
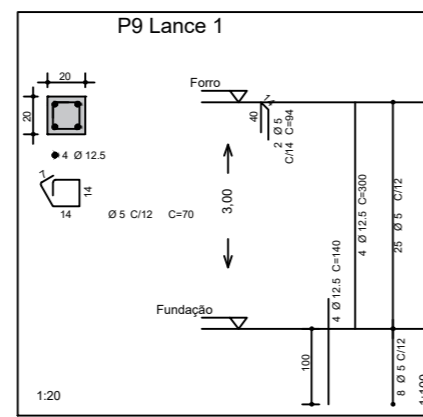
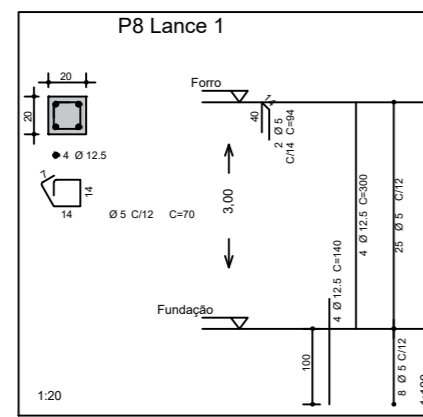
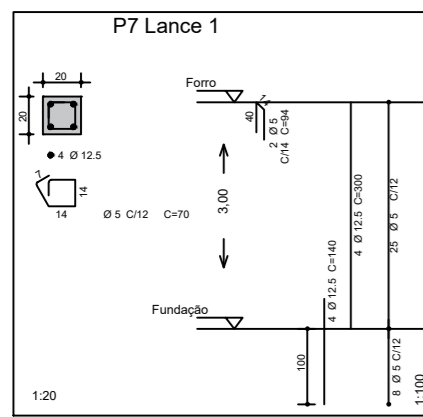
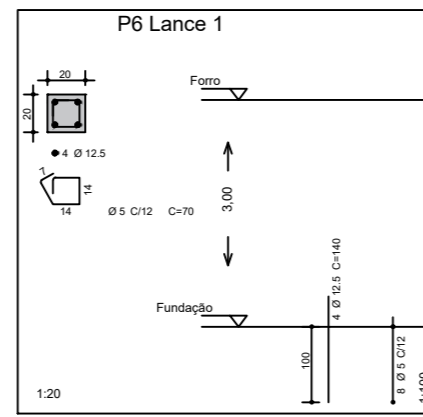
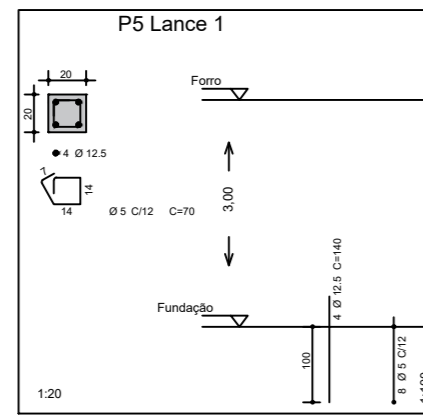
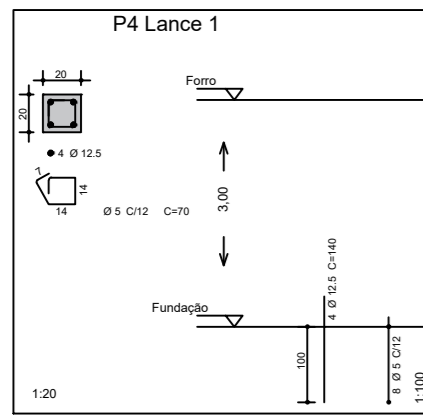
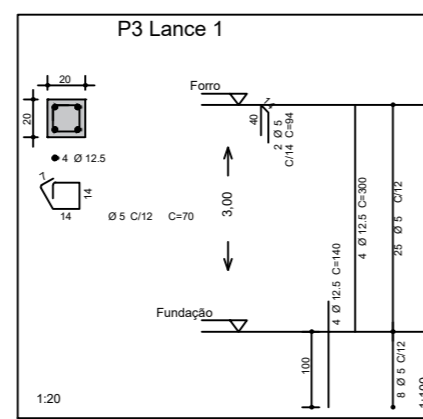
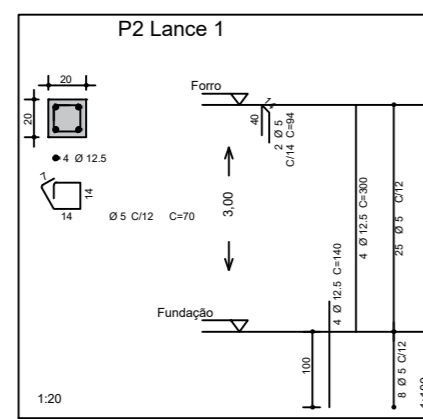
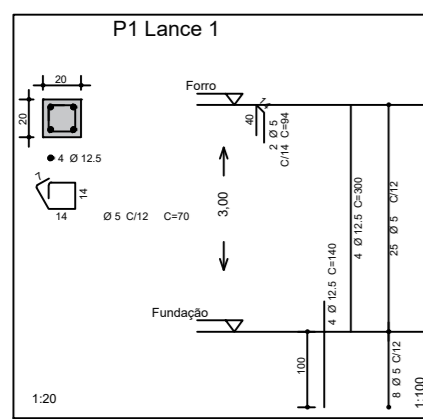
DATA:
03/2023

ÁREA:
115,00 m²

ESCALA:
1:50

FOLHA:
08/10

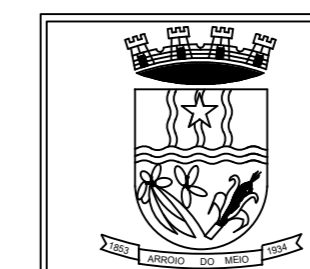
PROJETO ESTRUTURAL - PILARES
ESCALA INDICADA



AÇO	BIT	QUANT	COMPRIMENTO	
			UNIT	TOTAL
	mm		cm	cm
P1 Lance 1				
50A	12.5	4	300	1200
50A	12.5	4	140	560
60A	5	33	70	2310
60A	5	2	94	188
P2 Lance 1				
50A	12.5	4	300	1200
50A	12.5	4	140	560
60A	5	33	70	2310
60A	5	2	94	188
P3 Lance 1				
50A	12.5	4	300	1200
50A	12.5	4	140	560
60A	5	33	70	2310
60A	5	2	94	188
P4 Lance 1				
50A	12.5	4	140	560
60A	5	8	70	560
P5 Lance 1				
50A	12.5	4	140	560
60A	5	8	70	560
P6 Lance 1				
50A	12.5	4	140	560
60A	5	8	70	560
P7 Lance 1				
50A	12.5	4	300	1200
50A	12.5	4	140	560
60A	5	33	70	2310
60A	5	2	94	188
P8 Lance 1				
50A	12.5	4	300	1200
50A	12.5	4	140	560
60A	5	33	70	2310
60A	5	2	94	188
P9 Lance 1				
50A	12.5	4	300	1200
50A	12.5	4	140	560
60A	5	33	70	2310
60A	5	2	94	188
P10 Lance 1				
50A	12.5	4	140	560
60A	5	8	70	560
P11 Lance 1				
50A	12.5	4	300	1200
50A	12.5	4	140	560
60A	5	33	70	2310
60A	5	2	94	188
P12 Lance 1				
50A	12.5	4	300	1200
50A	12.5	4	140	560
60A	5	33	70	2310
60A	5	2	94	188
P13 Lance 1				
50A	12.5	4	300	1200
50A	12.5	4	140	560
60A	5	33	70	2310
60A	5	2	94	188

P14 Lance 1					
50A	12.5	4	300	1200	
50A	12.5	4	140	560	
60A	5	33	70	2310	
60A	5	2	94	188	
P15 Lance 1					
50A	12.5	4	300	1200	
50A	12.5	4	140	560	
60A	5	33	70	2310	
60A	5	2	94	188	
P16 Lance 1					
50A	12.5	4	300	1200	
50A	12.5	4	140	560	
60A	5	33	70	2310	
60A	5	2	94	188	

RESUMO DE AÇO			
AÇO	BIT	COMPR	PESO
	mm	m	kgf
60A	5	322,16	49,6
50A	12.5	233,60	225,0
Peso Total	60A =		49,6 kgf
Peso Total	50A =		225,0 kgf



PREFEITURA MUNICIPAL
ARROIO DO MEIO / RS

ADMINISTRAÇÃO:
2021 - 2024
RUA MONSENHOR JACOB SEGER | 186 | FONE 051 3716-1166
ARROIO DO MEIO | RS

ASSUNTO: PROJETO EXECUTIVO - CENTRO DE EVENTOS - SEDE MQG

Prefeito Municipal
DANILO JOSÉ BRUXEL

Responsável Técnico
WILLIAM R. BIANCHIN
CREA RS 259.964

ENDEREÇO:
RUA VALDIR M. BOURSCHIED
BAIRRO MEDIANEIRA

PRANCHA:
PROJETO ESTRUTURAL
PILARES

DATA:
03/2023

ÁREA:
115,00 m²

ESCALA:
1:50

FOLHA:
09/10